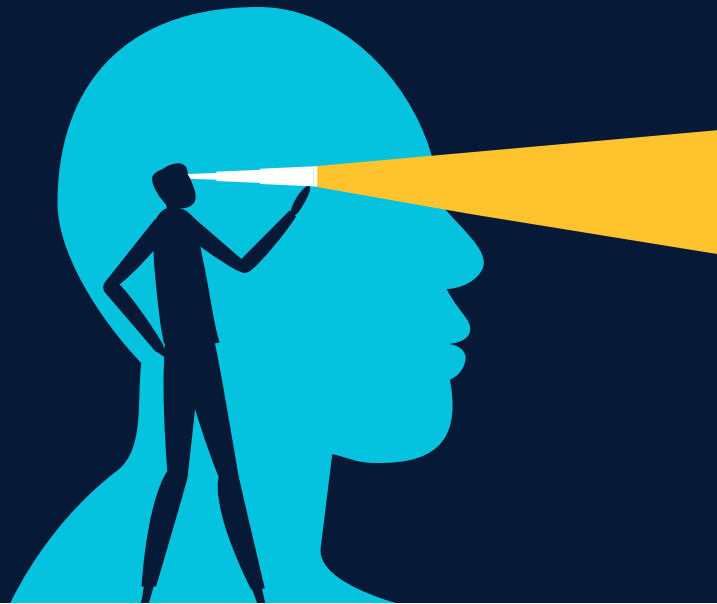


# Three important insights from 2023



**From the Field**  
January 2024

## Key Insights

- Bond yields have rebounded and are unlikely to return to the anemic levels of the 2010s, despite the Fed's dovish pivot.
- Given the significant outperformance and high returns on equity by the Magnificent 7 companies, we believe they should be viewed as a separate asset class.



**Tim Murray, CFA®**  
*Capital Markets Strategist,  
Multi-Asset Division*

**A**nother year has gone by, and looking back, we learned a lot in 2023. Here are three key insights investors should keep in mind as we enter 2024.

### Yield is back.

Bond yields have finally rebounded. During the period 2013–2021, the average yield to worst<sup>1</sup> for the Bloomberg Global High Yield Bond Index and the Bloomberg Global Aggregate Index was a modest 6.04% and 1.57%, respectively. As of December 15, 2023, this measure was 8.36% for the global high yield index and 3.60% for the global aggregate index.

Although they may drift lower, given the Fed's recent dovish signal, bond yields are unlikely to return to the anemic levels

of the 2010s as long as inflation remains a threat. Current yield can, therefore, once again be a useful feature in bond portfolios as we move into 2024.

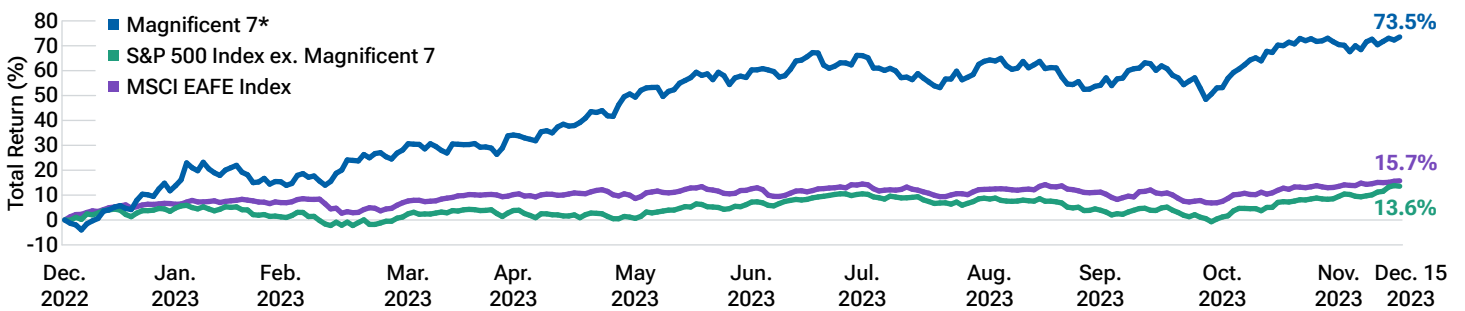
### The Magnificent 7 should be viewed as a separate asset class.

We witnessed the most top-heavy equity markets ever in 2023. The Magnificent 7—a group of stocks that includes Alphabet, Amazon.com, Apple, Meta Platforms, Microsoft, NVIDIA, and Tesla—posted massive returns and significantly outpaced their peers in the S&P 500 Index and other global stocks (Figure 1). Given this huge gap in performance, we believe the Magnificent 7 should be viewed as a separate asset class.

<sup>1</sup>Yield to worst is a measure of the lowest possible yield that can be received on a bond with an early retirement provision.

## Magnificent 7 significantly outperformed other stocks in 2023

(Fig. 1) Comparing year-to-date total returns of mega-cap stocks versus other S&P 500 and global stocks



December 31, 2022, through December 15, 2023.

**Past performance is not a reliable indicator of future performance.** These statistics are not a projection of future results or company performance. Actual results may vary significantly.

Sources: T. Rowe Price analysis using data from FactSet Research Systems Inc. All rights reserved. MSCI and S&P indices. See Additional Disclosures.

\*The Magnificent 7 stocks are Apple, Alphabet, Amazon.com, Meta Platforms, Microsoft, NVIDIA, and Tesla. The specific securities identified and described are for informational purposes only and do not represent recommendations. Not representative of an actual investment. There is no assurance that an investment in any security was or will be profitable.

The high valuations of these seven mega-cap companies collectively, which make up nearly 30% of the S&P 500 Index, has distorted overall U.S. stock valuations. While these high valuations have been accompanied by similarly high returns on equity as of December 18, the real question is whether the Magnificent 7 will be able to sustain the level of profitability and efficiency that they have so far exhibited.

### The Fed has pivoted.

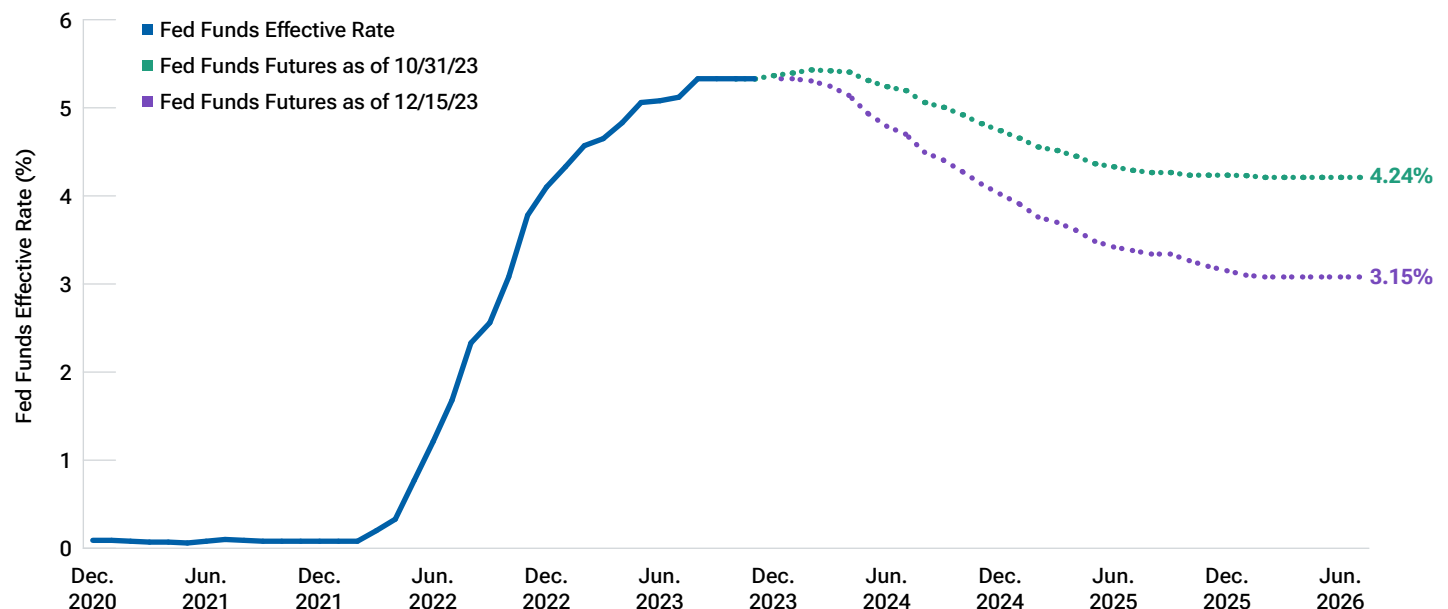
The surprisingly dovish signal from the Federal Open Market Committee—a softer rate hike narrative and lower economic projections—at the end of its December meeting was one of the most notable events of the year. Investors spent 2023 fearing that the impacts of tighter monetary policy, amid the Federal Reserve’s (Fed) focus on fighting

inflation, would drag the U.S. economy into recession. Fed Chair Jerome Powell’s recent announcement that the Fed would be giving equal attention to its two mandates—fighting inflation and supporting the economy—going forward means that the likelihood of recession in 2024 has fallen considerably.

We will be closely monitoring all of these themes as we move into 2024 and will update you accordingly as they play out.

## A dovish Fed signal lowers the likelihood of recession

(Fig. 2) Fed funds effective rate and futures market pricing



December 31, 2020, through December 15, 2023.

**Past results are not a reliable indicator of future results.** Actual outcomes may differ materially from forward estimates.

Sources: Bloomberg Finance L.P.

## INVEST WITH CONFIDENCE™

T. Rowe Price identifies and actively invests in opportunities to help people thrive in an evolving world, bringing our dynamic perspective and meaningful partnership to clients so they can feel more confident.

---

### Additional Disclosure

CFA® and Chartered Financial Analyst® are registered trademarks owned by CFA Institute.

MSCI and its affiliates and third-party sources and providers (collectively, "MSCI") makes no express or implied warranties or representations and shall have no liability whatsoever with respect to any MSCI data contained herein. The MSCI data may not be further redistributed or used as a basis for other indices or any securities or financial products. This report is not approved, reviewed, or produced by MSCI. Historical MSCI data and analysis should not be taken as an indication or guarantee of any future performance analysis, forecast or prediction. None of the MSCI data is intended to constitute investment advice or a recommendation to make (or refrain from making) any kind of investment decision and may not be relied on as such.

The S&P 500 Index is a product of S&P Dow Jones Indices LLC, a division of S&P Global, or its affiliates ("SPDJI") and has been licensed for use by T. Rowe Price. Standard & Poor's® and S&P® are registered trademarks of Standard & Poor's Financial Services LLC, a division of S&P Global ("S&P"); Dow Jones® is a registered trademark of Dow Jones Trademark Holdings LLC ("Dow Jones"); T. Rowe Price's Products are not sponsored, endorsed, sold or promoted by SPDJI, Dow Jones, S&P, their respective affiliates, and none of such parties make any representation regarding the advisability of investing in such product(s) nor do they have any liability for any errors, omissions, or interruptions of the S&P 500 Index.

---

### Important Information

This material is provided for informational purposes only and is not intended to be investment advice or a recommendation to take any particular investment action.

The views contained herein are those of the authors as of January 2024 and are subject to change without notice; these views may differ from those of other T. Rowe Price associates.

This information is not intended to reflect a current or past recommendation concerning investments, investment strategies, or account types, advice of any kind, or a solicitation of an offer to buy or sell any securities or investment services. The opinions and commentary provided do not take into account the investment objectives or financial situation of any particular investor or class of investor. Please consider your own circumstances before making an investment decision.

Information contained herein is based upon sources we consider to be reliable; we do not, however, guarantee its accuracy. **Actual outcomes may differ materially from any estimates or forward-looking statements provided.**

**Past performance is not a reliable indicator of future performance.** All investments are subject to market risk, including the possible loss of principal. **Investing in technology stocks entails specific risks, including the potential for wide variations in performance and usually wide price swings, up and down. Technology companies can be affected by, among other things, intense competition, government regulation, earnings disappointments, dependency on patent protection and rapid obsolescence of products and services due to technological innovations or changing consumer preferences. Fixed-income securities are subject to credit risk, liquidity risk, call risk, and interest-rate risk. As interest rates rise, bond prices generally fall. Investments in high-yield bonds involve greater risk of price volatility, illiquidity, and default than higher-rated debt securities.** All charts and tables are shown for illustrative purposes only.

T. Rowe Price Investment Services, Inc.

© 2024 T. Rowe Price. All Rights Reserved. T. ROWE PRICE, INVEST WITH CONFIDENCE, and the Bighorn Sheep design are, collectively and/or apart, trademarks of T. Rowe Price Group, Inc.