



# T.RowePrice

## T. Rowe Price Dynamic Global Bond Fund

Whenever the tide turns,  
make sure you have an anchor

## T. ROWE PRICE DYNAMIC GLOBAL BOND FUND

The T. Rowe Price Dynamic Global Bond Fund is a portfolio of global fixed-income securities seeking to deliver consistent income and managing downside risk.

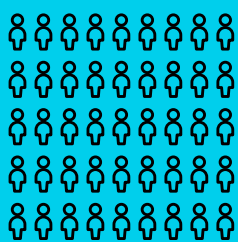


**Scott Solomon**  
Portfolio Manager  
14 years investment  
experience



**Quentin Fitzsimmons**  
Portfolio Manager  
32 years investment  
experience

### The Power of the Global Research Platform



# 97

Global Fixed  
Income Research  
Analysts<sup>1</sup>

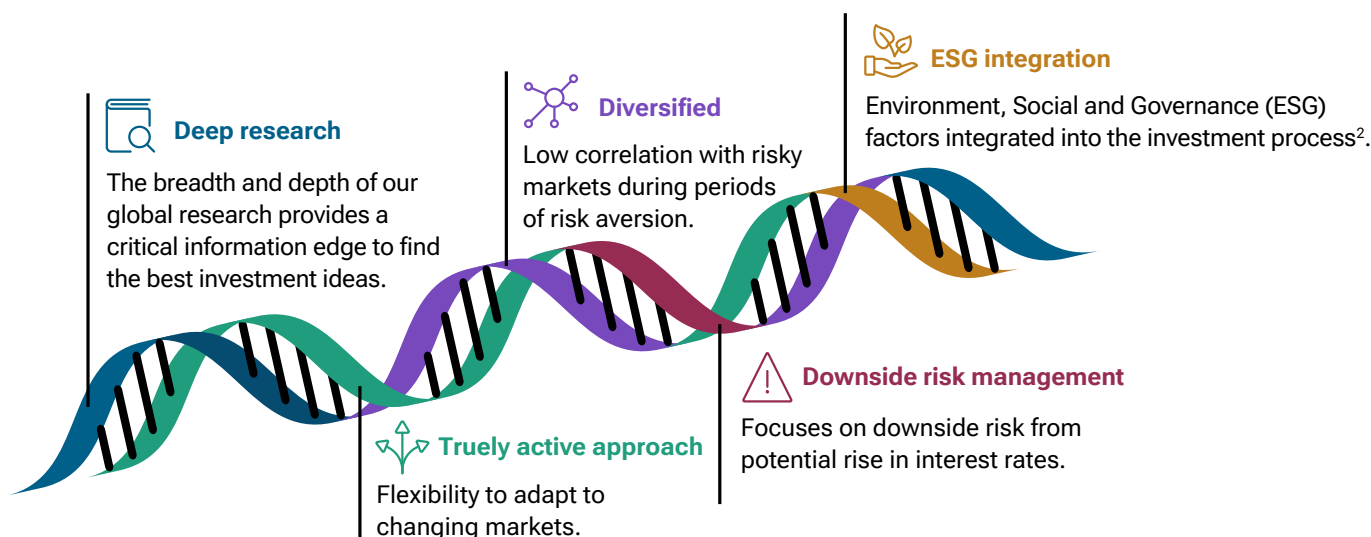
on the ground in different countries,  
researching the securities and markets  
that drive portfolio selection.

### Flexible Fixed Income



The portfolio invests across  
the full global fixed-income universe,  
with the ability to adapt quickly to  
market changes to manage risk and  
seek returns potential.

## The DNA of the T. Rowe Price Dynamic Global Bond Fund



<sup>1</sup> Fixed income research platform consisting of 62 credit analysts, 10 associate analysts, 21 quantitative analysts and strategists, and 4 economists as of 30 September 2023.

<sup>2</sup> ESG considerations form a part of our overall research process, helping us alongside other factors to identify investment opportunities and manage investment risk. At T. Rowe Price this is known as ESG integration. However, we may conclude that other attributes of an investment outweigh ESG considerations when making investment decisions.

## Fund at a glance

Features	T. Rowe Price Dynamic Global Bond Fund - S class	T. Rowe Price Dynamic Global Bond Fund - I class
APIR	ETL2511AU	ETL0398AU
ARSN	167 869 561	167 869 561
Benchmark	Bloomberg AusBond Bank Bill Index (AUD)	
Base currency	AUD	AUD
Minimum investment	\$50,000	\$500,000
Minimum suggested time frame	5 years	5 years
Management fees and costs	0.59% pa <sup>1</sup> of the NAV of the Fund	0.40% pa <sup>2</sup> of the NAV of the Fund
Distribution frequency	Quarterly	Quarterly
Risk (please read the PDS for further details)	<p>Medium. The following risks are materially relevant to the Fund.</p> <p><b>Credit risk:</b> that an issuer of credit support provider of a debt security could suffer an adverse change in financial conditions.</p> <p><b>Volatility risk:</b> the performance of the Fund has a risk of high volatility</p> <p><b>Emerging markets risk:</b> emerging markets are less established than developed markets and therefore involve higher risks.</p>	
Investor profile	<p>The Fund may be suitable for investors who:</p> <ul style="list-style-type: none"> <li>Seek the potential for a high level of current income and some capital appreciation over time</li> <li>Wish to diversify their portfolio</li> </ul> <p>The Fund may not be suitable for investors who:</p> <ul style="list-style-type: none"> <li>Are unable to accept the risk associated with investing in global fixed income and derivatives</li> <li>Have an investment time horizon of five years or less</li> </ul>	

### The T. Rowe Price advantage

Since our formation in 1937, we have had one purpose: To meet our clients' individual needs, helping them to achieve their long-term financial goals.

We aim to deliver global investment management excellence that you can rely on for the long term.

As a global investment manager with AUD2,094.2bn in assets under management<sup>3</sup> we actively listen to develop the types of strategies that our clients need. With clients in 50 countries, we offer a broad range of equity and fixed income strategies all powered by one of the largest and most experienced global research platforms in the industry, which helps us uncover the most attractive investments worldwide.

## Ask us anything

For more information about T. Rowe Price and our investment capabilities, please contact our dedicated team on 02 8667 5700 or speak to your financial adviser.

<sup>1</sup> The Management Fee for the T. Rowe Price Dynamic Global Bond Fund – S class is 0.59% p.a. and the Indirect Cost is 0.00% p.a.

<sup>2</sup> The Management Fee for the T. Rowe Price Dynamic Global Bond Fund – I class is 0.40% p.a. and the Indirect Cost is 0.00% p.a. Full details of other fees and charges are available within the Fund's Product Disclosure Statement and Reference Guide.

<sup>3</sup> As at 30 September 2023. Firmwide AUM includes assets managed by T. Rowe Price Associates, Inc. and its investment advisory affiliates. Assets under management are calculated in U.S. dollars and converted to Australian dollars using an exchange rate determined by an independent third party.

All figures above are as of 30 September 2023 unless otherwise stated.

## INVEST WITH CONFIDENCE®

### Important Information

Equity Trustees Limited ("Equity Trustees") (ABN: 46 004 031 298, AFSL: 240975) is a subsidiary of EQT Holdings Limited (ABN: 22 607 797 615), a publicly listed company on the Australian Stock Exchange (ASX:EQT). Equity Trustees and T. Rowe Price Australia Limited ("TRPAU") (ABN: 13 620 668 895, AFSL: 503741) are, respectively, the responsible entity and investment manager of the T. Rowe Price Australian Unit Trusts.

A Target Market Determination for each T. Rowe Price Australian Unit Trust (or class of units in a Trust) is available at <https://www.eqt.com.au/insto>. It describes who the financial product is likely to be appropriate for (i.e. the target market), and any conditions around how the product can be distributed to investors. It also describes the events or circumstances where Equity Trustees Limited, the responsible entity of the T. Rowe Price Australian Unit Trusts may need to review the Target Market Determination for the financial product.

**Past performance is not a reliable indicator of future performance.** The price of any fund may go up or down. Investment involves risk including a possible loss to the principal amount invested. For general information purposes only, does not take into account the investment objectives, financial situation or needs of any particular investor. For further details, please refer to each fund's product disclosure statement and reference guide which are available from Equity Trustees ([www.eqt.com.au/insto](http://www.eqt.com.au/insto)) and TRPAU ([www.troweprice.com.au/investor](http://www.troweprice.com.au/investor)).

Information and opinions presented have been obtained or derived from sources believed to be reliable and current; however, we cannot guarantee the sources' accuracy or completeness. There is no guarantee that any forecasts made will come to pass. The views contained herein are as of the date noted on the material and are subject to change without notice; these views may differ from those of other T. Rowe Price group companies and/or associates. Under no circumstances should the material, in whole or in part, be copied or redistributed without consent from T. Rowe Price.

This document has been prepared without taking account of any person's individual objectives, financial situation or needs. A person should, before making any investment decisions, consider the appropriateness of the information in this document and seek independent professional advice having regard to their objectives, financial situation and needs.

Any person should consider the relevant product disclosure statement ("PDS") in relation to the fund(s) named in this document (if any) before making a decision in relation to the relevant product. Contact Equity Trustees Limited, the responsible entity and T. Rowe Price Australia Limited, the investment manager, for a copy of the PDS.

© 2023 T. Rowe Price. All Rights Reserved. T. ROWE PRICE, INVEST WITH CONFIDENCE, and the Bighorn Sheep design are, collectively and/ or apart, trademarks of T. Rowe Price Group, Inc.