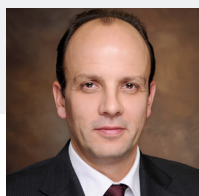




**PRICE
POINT**[®]

July 2018

In-depth analysis and insights
to inform your decision-making.



Peter Botoucharov
Credit Analyst

Fixed Income

TURKEY: SHOULD INVESTORS REMAIN LEERY OF THE LIRA?

KEY POINTS

- The Turkish lira suffered a pronounced sell-off in the period before the June 24 general elections due to tepid policy responses to global market conditions.
- Although monetary policy simplification and interest rate hikes were constructive, we believe additional tightening is needed to stabilize the currency in the postelection period.
- However, the Erdogan government's long-standing priority of maintaining high levels of economic growth clouds the outlook for further policy action.
- While the lira appears undervalued and favorable debt profiles benefit the corporate sector, we remain cautious toward Turkish assets in the postelection period.

While Recep Tayyip Erdogan's first-round victory in the June 24 presidential election brings increased political certainty to Turkey's future, the country remains one of the more vulnerable investments in emerging markets due to continued concerns regarding the stability of the currency. While most emerging market currencies declined against the strengthening U.S. dollar this year, the Turkish lira suffered a pronounced sell-off, at one point falling more than 20% below its value at the beginning of the year. Despite the central bank of Turkey (CBT) simplifying its monetary policy framework and implementing rate hikes in May, additional tightening will be needed in the period following the election as large macroeconomic imbalances have not been thoroughly addressed.

POSITIVE STEPS, BUT MORE NEEDED

The announcement of monetary simplification was, in our view, a significant step forward in addressing the rampant inflation and falling lira.

The move switched the key funding rate that the CBT uses to fund Turkey's financial institutions to the one-week repo rate from the previous Late Liquidity Window (LLW). The CBT raised the repo rate from 8.5% to 16.5% and then hiked it again the following week to 17.75%. Crucially, the new framework increased clarity and brought a more rules-based approach to how monetary policy is implemented and funding rates are set and maintained.

However, we believe that additional policy tightening will be needed to attract capital back into the country and stabilize the lira, for two main reasons. First, a key trigger to the lira's underperformance was the ongoing global shift to a higher-rate, tighter monetary environment, which has seen U.S. Treasury yields climb and the dollar strengthen in 2018. We expect these trends to continue in the medium term, which would exacerbate

pressures on the CBT to keep pace with market trends rather than fall behind as it did earlier this year.

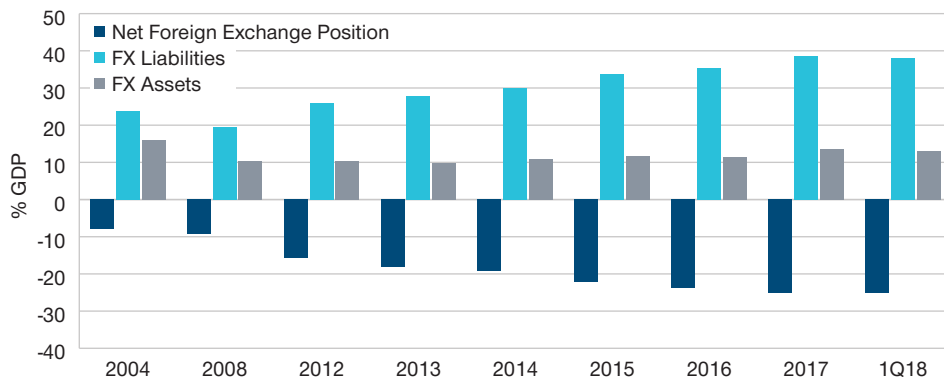
Second, effective real interest rates are still not high enough to stabilize the lira long term and the real rate could get squeezed further as it is likely that inflation in Turkey will continue to rise despite the recent rate hikes. The government's accommodative fiscal policy, alongside the effects of the lira weakness and ongoing fiscal stimulus, could push headline consumer price index inflation up an additional 3% to 4% in the second half of the year, in our view. Currently, the market is pricing in around 75bps more of additional rate hikes on top of the 175bps hike that came on the heels of the policy simplification. If policymakers again fall noticeably behind market expectations for tightening, another run on the lira seems likely. However, further positive steps in the postelection period could result in a sustained rally in the country's assets as the lira is currently cheap relative to its fundamentals and many emerging market currencies.

**POLITICAL PRIORITIES
CLOUD OUTLOOK**

Complicating the outlook are the uncertain longer-term priorities of Erdogan following his re-election as president. Erdogan's government has long focused on maintaining a high economic growth rate in order to satisfy the country's youthful demographic and growing population. This economic growth has been achieved largely by increased borrowing in the private sector in order to fill a growing gap between investment and savings levels. Figures 1 and 2 illustrate the rise in foreign currency exposure of the country's corporate sector, along with the escalation in the loan-to-deposit ratio in the banking sector, which was the second fastest, globally, over the past 10 years, following China.

FIGURE 1: Nonfinancial Corporate FX Assets and Liabilities

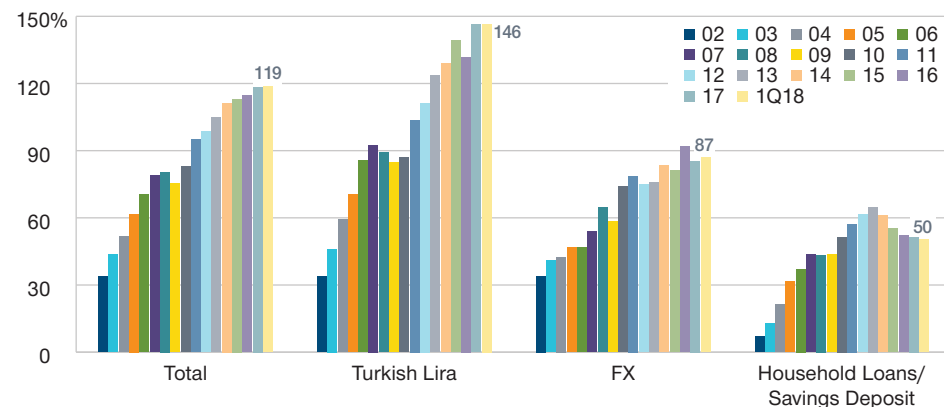
As of March 31, 2018



Sources: The central bank of Turkey and Haver Analytics.

FIGURE 2: Banking Sector LDP Ratio

As of March 31, 2018



Sources: The central bank of Turkey and Haver Analytics.

While the victory for Erdogan alongside a majority in parliament for his Justice and Development Party (AKP) should bring political stability in the near-term, it also makes it unlikely that there will be a sudden deviation from Erdogan's long-held objectives. His comments in early May stating that "interest rates are the mother and father of all evil" cannot be easily dismissed.

Sticking to this growth-first agenda at a time when global interest rates are trending higher would likely trigger further sharp depreciations in the lira, which would eventually be felt in the wider economy

more severely than the sell-offs earlier this year. The Turkish economy is reliant on foreign capital to grow, and if policymakers fail to rein in inflation, capital will continue to exit the country. Eventually, over the next one to two years, external imbalances and rising leverage ratios would become unsustainable for an increasing number of corporates and could trigger negative asset quality cycle, which would, in turn, put pressure on the country's banks. While the CBT does have room on its balance sheet to step in and support the private sector, this would seriously impact Turkey's credit quality and probably result in a wide sell-off in Turkish assets.

The postelection period is likely to be critical. With the immediate political necessities of winning an election out of the way, the government will have increased flexibility to address the market realities facing Turkey's economy.

POSTELECTION OPTIMISM?

Working in the Turkish economy's favor is the fact that this situation is not likely to occur in the near term. The corporate sector benefits from a favorable duration profile and does not face any serious funding concerns in the immediate future. In addition, the domestic banking sector continues to access long-term external borrowing

and is able to provide the liquidity needed for the corporate sector to roll over its debt.

The main concern during the recent sell-offs was not so much unsustainable external debt levels but the direction and speed of the growing imbalances, alongside the lack of policy response. While we believe that no serious threat to the private sector is imminent, it cannot

be ruled out over the longer term in the absence of further tightening by the central bank and a willingness by the government to ease its growth objective.

The postelection period is likely to be critical. With the immediate political necessities of winning an election out of the way, the government will have increased flexibility to address the market realities facing Turkey's economy. We are hopeful that the recent policy simplification and increased rate hikes are signs that the CBT and the Turkish government are now more committed to maintaining long-term stability. However, the government's recent policy priorities and inflammatory rhetoric are a reminder of the need to approach the situation cautiously and employ prudent risk management of lira holdings and investments in Turkey more generally.

INVEST WITH CONFIDENCE®

T. Rowe Price focuses on delivering investment management excellence that investors can rely on—now and over the long term.

To learn more, please visit troweprice.com.

Important Information

This material is being furnished for general informational purposes only. The material does not constitute or undertake to give advice of any nature, including fiduciary investment advice, and prospective investors are recommended to seek independent legal, financial and tax advice before making any investment decision. T. Rowe Price group of companies including T. Rowe Price Associates, Inc. and/or its affiliates receive revenue from T. Rowe Price investment products and services. **Past performance is not a reliable indicator of future performance.** The value of an investment and any income from it can go down as well as up. Investors may get back less than the amount invested.

The material does not constitute a distribution, an offer, an invitation, a personal or general recommendation or solicitation to sell or buy any securities in any jurisdiction or to conduct any particular investment activity. The material has not been reviewed by any regulatory authority in any jurisdiction.

Information and opinions presented have been obtained or derived from sources believed to be reliable and current; however, we cannot guarantee the sources' accuracy or completeness. There is no guarantee that any forecasts made will come to pass. The views contained herein are as of the date written and are subject to change without notice; these views may differ from those of other T. Rowe Price group companies and/or associates. Under no circumstances should the material, in whole or in part, be copied or redistributed without consent from T. Rowe Price.

The material is not intended for use by persons in jurisdictions which prohibit or restrict the distribution of the material and in certain countries the material is provided upon specific request.

It is not intended for distribution to retail investors in any jurisdiction.

Australia—Issued in Australia by T. Rowe Price Australia Limited (ABN: 13 620 668 895 and AFSL: 503741), Level 50, Governor Phillip Tower, 1 Farrer Place, Suite 50B, Sydney, NSW 2000, Australia. For Wholesale Clients only.

Canada—Issued in Canada by T. Rowe Price (Canada), Inc. T. Rowe Price (Canada), Inc.'s investment management services are only available to Accredited Investors as defined under National Instrument 45-106. T. Rowe Price (Canada), Inc. enters into written delegation agreements with affiliates to provide investment management services.

DIFC—Issued in the Dubai International Financial Centre by T. Rowe Price International Ltd. This material is communicated on behalf of T. Rowe Price International Ltd. by its representative office which is regulated by the Dubai Financial Services Authority. For Professional Clients only.

EEA—Issued in the European Economic Area by T. Rowe Price International Ltd, 60 Queen Victoria Street, London EC4N 4TZ which is authorised and regulated by the UK Financial Conduct Authority. For Professional Clients only.

Hong Kong—Issued in Hong Kong by T. Rowe Price Hong Kong Limited, 21/F, Jardine House, 1 Connaught Place, Central, Hong Kong. T. Rowe Price Hong Kong Limited is licensed and regulated by the Securities & Futures Commission. For Professional Investors only.

New Zealand—Issued in New Zealand by T. Rowe Price Australia Limited (ABN: 13 620 668 895 and AFSL: 503741), Level 50, Governor Phillip Tower, 1 Farrer Place, Suite 50B, Sydney, NSW 2000, Australia. No Interests are offered to the public. Accordingly, the Interests may not, directly or indirectly, be offered, sold or delivered in New Zealand, nor may any offering document or advertisement in relation to any offer of the Interests be distributed in New Zealand, other than in circumstances where there is no contravention of the Financial Markets Conduct Act 2013.

Singapore—Issued in Singapore by T. Rowe Price Singapore Private Ltd., No. 501 Orchard Rd, #10-02 Wheelock Place, Singapore 238880. T. Rowe Price Singapore Private Ltd. is licensed and regulated by the Monetary Authority of Singapore. For Institutional and Accredited Investors only.

Switzerland—Issued in Switzerland by T. Rowe Price (Switzerland) GmbH, Talstrasse 65, 6th Floor, 8001 Zurich, Switzerland. For Qualified Investors only.

USA—Issued in the USA by T. Rowe Price Associates, Inc., 100 East Pratt Street, Baltimore, MD, 21202, which is regulated by the U.S. Securities and Exchange Commission. For Institutional Investors only.

T. ROWE PRICE, INVEST WITH CONFIDENCE, and the bighorn sheep design are, collectively and/or apart, trademarks of T. Rowe Price Group, Inc. © 2018 T. Rowe Price. All rights reserved.