

# Why balance is important amid equity market volatility

From the Field  
July 2024



## Key Insights

- A more challenging period seems likely for equity markets. Geopolitics, sticky inflation, and potentially peaking earnings growth are likely to generate some volatility.
- A small cohort of companies have dominated market performance this year, but the period ahead may be more complex and near-term earnings will likely drive sentiment.
- A more balanced portfolio with exposure to the best secular themes, coupled with areas that offer more defensive characteristics, will be important.

Equity markets have performed well this year, but returns have been concentrated in a narrow subset of the market, namely artificial intelligence (AI) and artificial incretins (GLP-1s). However, we are entering a key earnings season in which many of the significant outperformers year-to-date may begin to see a slowing rate of returns improvement. In our experience, fundamental momentum tends to matter more in the short term for relative performance and valuation, and therefore the margin for error is smaller.

## Two seismic developments: balancing exposure to artificial intelligence and artificial incretins (AI<sub>2</sub>)

Corporate earnings for many large technology and health care companies have been strong over the past 18 months. However, in terms of the AI infrastructure buildout, we believe we are clearly past the early phase of adoption and most meaningful inflection in spending. It is wise at this point to question whether the current pace of capital expenditure growth can be sustained at these levels. The risk of an unexpected surprise in terms of earnings guidance could prompt a rotation out of AI names. That needs to be managed in a strategic manner, especially from a factor risk perspective.



**David Eiswert**  
Portfolio Manager,  
Global Focused Growth  
Equity Strategy



**Nabil Hanano**  
Associate Portfolio  
Manager, Global Focused  
Growth Equity Strategy

“The risk of an unexpected surprise...could prompt a rotation out of AI names.”

— David Eiswert  
Portfolio Manager, Global Focused  
Growth Equity Strategy

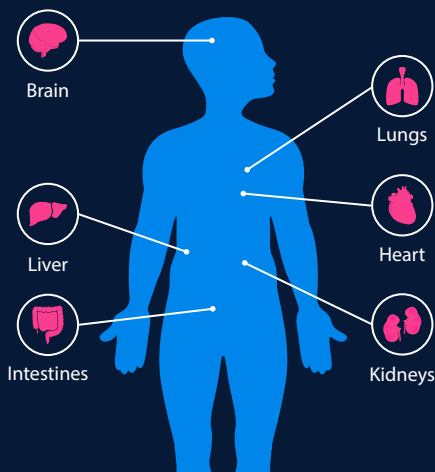
## GLP-1 impacts beyond diabetes and obesity

While GLP-1 receptors are concentrated in the pancreas, they are spread throughout the body—and evidence is growing that GLP-1 drugs can interact directly with GLP-1 receptors found in other organs.

May reduce alcohol cravings, and early evidence suggests a possible role in avoiding neurodegenerative diseases such as Alzheimer's and Parkinson's.

May reduce fat buildup in those with fatty liver disease.

May speed the breakdown of fat cells to produce energy.



May reduce inflammation in the lungs and other organs, although it's unclear how much of this is due to weight loss.

May reduce inflammation in the heart and circulatory system.

May preserve kidney function in those with chronic kidney disease.

We have for some time treated our exposure to the so-called Magnificent Seven (Apple, Microsoft, Alphabet, Amazon, NVIDIA, Meta Platforms, and Tesla) as a separately defined sector. That allows more potential to govern the impact on portfolio returns versus the benchmark, particularly given the unusually high concentration of these stocks in market indices. The bar is now set extremely high for these companies in terms of earnings delivery—a risk that warrants due consideration.

While the initial infrastructure cycle for AI may be peaking, we are, however, only just beginning to see the potential benefits of AI in other areas. In the next few years, we expect to see an acceleration in terms of speed, productivity, and innovation as companies employ their AI capabilities. The potential is not limited to technology—it traverses nearly every sector and industry, some that may not be immediately obvious. Energy, industrials, and even real estate are all potential beneficiaries of the AI cycle.

The other seismic shift of recent years has been health care innovation, specifically the development of GLP-1s. We feel much more optimistic about the potential of this area in the near term. The benefits of these drugs keep expanding (see graphic).

GLP-1s have been lauded, including claims that obesity could potentially be cured in the next 10 years. This has significant repercussions. The ability of the drugs to regulate body weight at a relatively low cost has huge potential benefits for both society and economies.

An oral version of GLP-1s is being developed and is likely to be available sooner rather than later. This would potentially see much greater adoption, and with it improved earnings for their manufacturers. Growth forecasts, however, will depend on constraints around capacity and the ability to deliver as demand increases.

### Importance of building a balanced portfolio

Rising valuations and a stretched investment cycle demand consideration of the potential for market rotation. Building a portfolio that invests in technology and health care is important given the seismic shifts underway. But exposure here must be balanced with other areas such as energy, financials, industrials, and even consumer staples. These sectors have historically offered defensive qualities and steady growth that could potentially provide a buffer against market volatility.

“ While the infrastructure cycle for AI may be peaking, we are, however, only just beginning to see the potential benefits of AI in other areas.

– Nabil Hanano  
Associate Portfolio Manager,  
Global Focused Growth Equity Strategy

The wider macroeconomic backdrop is also a key consideration. As we have conveyed previously, we believe we are in the early stages of an equilibrium shift. One where the economy has veered from abundance to scarcity. This will likely see inflation remain stickier and interest rates higher for longer. Geopolitical risks play into this dynamic. A more dangerous world means a higher risk premium put on natural resources and a greater importance on supply chain independence.

The U.S. presidential election cycle adds another level of complexity with different policy implications.

This mosaic of changes means that the playing field for investing is changing. Yet, this is where active management can take control. If the game has changed, it's important to change your strategy. But we believe this new equilibrium path offers new and broader opportunities, alongside a potential to build a better risk profile.

 **...we believe this new equilibrium path offers new and broader opportunities, alongside a potential to build a better risk profile.**

– David Eiswert  
Portfolio Manager, Global Focused  
Growth Equity Strategy

## INVEST WITH CONFIDENCE™

T. Rowe Price identifies and actively invests in opportunities to help people thrive in an evolving world, bringing our dynamic perspective and meaningful partnership to clients so they can feel more confident.

The specific securities identified and described are for informational purposes only and do not represent recommendations. No assumptions should be made that investments in the securities identified and discussed were or will be profitable.

---

### Important Information

**This material is being furnished for general informational and/or marketing purposes only.** The material does not constitute or undertake to give advice of any nature, including fiduciary investment advice. Prospective investors are recommended to seek independent legal, financial and tax advice before making any investment decision. T. Rowe Price group of companies including T. Rowe Price Associates, Inc. and/or its affiliates receive revenue from T. Rowe Price investment products and services. **Past performance is not a reliable indicator of future performance.** The value of an investment and any income from it can go down as well as up. Investors may get back less than the amount invested.

The material does not constitute a distribution, an offer, an invitation, a personal or general recommendation or solicitation to sell or buy any securities in any jurisdiction or to conduct any particular investment activity. The material has not been reviewed by any regulatory authority in any jurisdiction.

Information and opinions presented have been obtained or derived from sources believed to be reliable and current; however, we cannot guarantee the sources' accuracy or completeness. There is no guarantee that any forecasts made will come to pass. The views contained herein are as of the date written and are subject to change without notice; these views may differ from those of other T. Rowe Price group companies and/or associates. Under no circumstances should the material, in whole or in part, be copied or redistributed without consent from T. Rowe Price.

The material is not intended for use by persons in jurisdictions which prohibit or restrict the distribution of the material and in certain countries the material is provided upon specific request. It is not intended for distribution to retail investors in any jurisdiction.

**DISCLOSURE CONTINUES ON THE FOLLOWING PAGE.**

---

## Important Information (cont.)

**Australia**—Issued by T. Rowe Price Australia Limited (ABN: 13 620 668 895 and AFSL: 503741), Level 28, Governor Phillip Tower, 1 Farrer Place, Sydney NSW 2000, Australia. For Wholesale Clients only.

**Brunei**—This material can only be delivered to certain specific institutional investors for informational purpose only. Any strategy and/or any products associated with the strategy discussed herein has not been authorised for distribution in Brunei. No distribution of this material to any member of the public in Brunei is permitted.

**Canada**—Issued in Canada by T. Rowe Price (Canada), Inc. T. Rowe Price (Canada), Inc.'s investment management services are only available to Accredited Investors as defined under National Instrument 45-106. T. Rowe Price (Canada), Inc. enters into written delegation agreements with affiliates to provide investment management services.

**Colombia, Chile, Mexico, Perú, Uruguay**—This material is prepared by T. Rowe Price International Ltd - Warwick Court, 5 Paternoster Square, London, EC4M 7DX which is authorised and regulated by the UK Financial Conduct Authority - and issued and distributed by locally authorized distributors only. For professional investors only.

**DIFC**—Issued in the Dubai International Financial Centre by T. Rowe Price International Ltd which is regulated by the Dubai Financial Services Authority as a Representative Office. For Professional Clients only.

**EEA**—Unless indicated otherwise this material is issued and approved by T. Rowe Price (Luxembourg) Management S.à r.l. 35 Boulevard du Prince Henri L-1724 Luxembourg which is authorised and regulated by the Luxembourg Commission de Surveillance du Secteur Financier. For Professional Clients only.

**Hong Kong**—Issued in Hong Kong by T. Rowe Price Hong Kong Limited, 6/F, Chater House, 8 Connaught Road Central, Hong Kong. T. Rowe Price Hong Kong Limited is licensed and regulated by the Securities & Futures Commission. For Professional Investors only.

**Indonesia**—This material is intended to be used only by the designated recipient to whom T. Rowe Price delivered; it is for institutional use only. Under no circumstances should the material, in whole or in part, be copied, redistributed or shared, in any medium, without prior written consent from T. Rowe Price. No distribution of this material to members of the public in any jurisdiction is permitted.

**Korea**—This material is intended only to Qualified Professional Investors. Not for further distribution.

**Mainland China**—This material is provided to qualified investors only. No invitation to offer, or offer for, or sale of, the shares will be made in the mainland of the People's Republic of China ("Mainland China", not including the Hong Kong or Macau Special Administrative Regions or Taiwan) or by any means that would be deemed public under the laws of the Mainland China. The information relating to the strategy contained in this material has not been submitted to or approved by the China Securities Regulatory Commission or any other relevant governmental authority in the Mainland China. The strategy and/or any product associated with the strategy may only be offered or sold to investors in the Mainland China that are expressly authorized under the laws and regulations of the Mainland China to buy and sell securities denominated in a currency other than the Renminbi (or RMB), which is the official currency of the Mainland China. Potential investors who are resident in the Mainland China are responsible for obtaining the required approvals from all relevant government authorities in the Mainland China, including, but not limited to, the State Administration of Foreign Exchange, before purchasing the shares. This document further does not constitute any securities or investment advice to citizens of the Mainland China, or nationals with permanent residence in the Mainland China, or to any corporation, partnership, or other entity incorporated or established in the Mainland China.

**Malaysia**—This material can only be delivered to specific institutional investor. This material is solely for institutional use and for informational purposes only. This material does not provide investment advice or an offering to make, or an inducement or attempted inducement of any person to enter into or to offer to enter into, an agreement for or with a view to acquiring, disposing of, subscribing for or underwriting securities. Nothing in this material shall be considered a making available of, solicitation to buy, an offering for subscription or purchase or an invitation to subscribe for or purchase any securities, or any other product or service, to any person in any jurisdiction where such offer, solicitation, purchase or sale would be unlawful under the laws of Malaysia.

**New Zealand**—Issued by T. Rowe Price Australia Limited (ABN: 13 620 668 895 and AFSL: 503741), Level 28, Governor Phillip Tower, 1 Farrer Place, Sydney NSW 2000, Australia. No Interests are offered to the public. Accordingly, the Interests may not, directly or indirectly, be offered, sold or delivered in New Zealand, nor may any offering document or advertisement in relation to any offer of the Interests be distributed in New Zealand, other than in circumstances where there is no contravention of the Financial Markets Conduct Act 2013.

**Philippines**—ANY STRATEGY AND/ OR ANY SECURITIES ASSOCIATED WITH THE STRATEGY BEING DISCUSSED HEREIN HAVE NOT BEEN REGISTERED WITH THE SECURITIES AND EXCHANGE COMMISSION UNDER THE SECURITIES REGULATION CODE. ANY FUTURE OFFER OR SALE OF THE STRATEGY AND/ OR ANY SECURITIES IS SUBJECT TO REGISTRATION REQUIREMENTS UNDER THE CODE, UNLESS SUCH OFFER OR SALE QUALIFIES AS AN EXEMPT TRANSACTION.

**Singapore**—Issued by T. Rowe Price Singapore Private Ltd. (UEN: 201021137E), 501 Orchard Rd, #10-02 Wheelock Place, Singapore 238880. T. Rowe Price Singapore Private Ltd. is licensed and regulated by the Monetary Authority of Singapore. For Institutional and Accredited Investors only.

**South Africa**—Issued in South Africa by T. Rowe Price International Ltd (TRPIL), Warwick Court, 5 Paternoster Square, London EC4M 7DX, is an authorised financial services provider under the Financial Advisory and Intermediary Services Act, 2002 (Financial Services Provider (FSP) Licence Number 31935), authorised to provide "intermediary services" to South African Investors. TRPIL's Complaint Handling Procedures are available to clients upon request. The Financial Advisory and Intermediary Services Act Ombud in South Africa deals with complaints from clients against FSPs in relation to the specific services rendered by FSPs. The contact details are noted below: Telephone: +27 12 762 5000, Web: [www.faisombud.co.za](http://www.faisombud.co.za), Email: [info@faisombud.co.za](mailto:info@faisombud.co.za)

**Switzerland**—Issued in Switzerland by T. Rowe Price (Switzerland) GmbH, Talstrasse 65, 6th Floor, 8001 Zurich, Switzerland. For Qualified Investors only.

**Taiwan**—This does not provide investment advice or recommendations. Nothing in this material shall be considered a solicitation to buy, or an offer to sell, a security, or any other product or service, to any person in the Republic of China.

**Thailand**—This material has not been and will not be filed with or approved by the Securities Exchange Commission of Thailand or any other regulatory authority in Thailand. The material is provided solely to "institutional investors" as defined under relevant Thai laws and regulations. No distribution of this material to any member of the public in Thailand is permitted. Nothing in this material shall be considered a provision of service, or a solicitation to buy, or an offer to sell, a security, or any other product or service, to any person where such provision, offer, solicitation, purchase or sale would be unlawful under relevant Thai laws and regulations.

**UK**—This material is issued and approved by T. Rowe Price International Ltd, Warwick Court, 5 Paternoster Square, London EC4M 7DX which is authorised and regulated by the UK Financial Conduct Authority. For Professional Clients only.

**USA**—Issued in the USA by T. Rowe Price Associates, Inc., 100 East Pratt Street, Baltimore, MD, 21202, which is regulated by the U.S. Securities and Exchange Commission. For Institutional Investors only.

© 2024 T. Rowe Price. All Rights Reserved. T. ROWE PRICE, INVEST WITH CONFIDENCE, and the Bighorn Sheep design are, collectively and/or apart, trademarks of T. Rowe Price Group, Inc.