



# How Value Can Benefit From a New Investment Cycle

Four factors set to drive a boom in capital expenditure.

September 2022

## KEY INSIGHTS

- There has been large-scale underinvestment from both corporates and governments since the global financial crisis.
- However, we have identified four factors that can help drive a new capital expenditure cycle.
- Many of the companies that are likely to benefit from a new capex cycle reside within value-oriented areas of the market.



**Ernest Yeung**

*Portfolio Manager, Emerging Markets  
Discovery Equity Strategy*

The changing of the guard in terms of value versus growth has been attributed to the post-pandemic recovery, decade-high inflation, and the potential for aggressive monetary tightening. However, as bottom-up investors, we are excited about the potential for a new capital investment cycle forming after many years of underinvestment. For value investors, this is a positive development, as increased spending can be a significant source of investment opportunities.

## Case for a New Investment Cycle

Since the global financial crisis (GFC) in 2008, we have seen large-scale underinvestment from both corporates and governments. Both policymakers and companies have focused on repairing balance sheets. Many industries have invested only at “maintenance capex levels,” rather than investing to improve productivity or expansion (Figure 1).

We believe many industries are now long overdue investment, after many years of neglect. A good example is the shipping industry, which has seen a dire lack of investment for years—from port capacity to ships. As the world recovered from the pandemic and demand returned, the industry has struggled due to the lack of investment. This has caused a backlog at ports and a sharp rise in container prices.

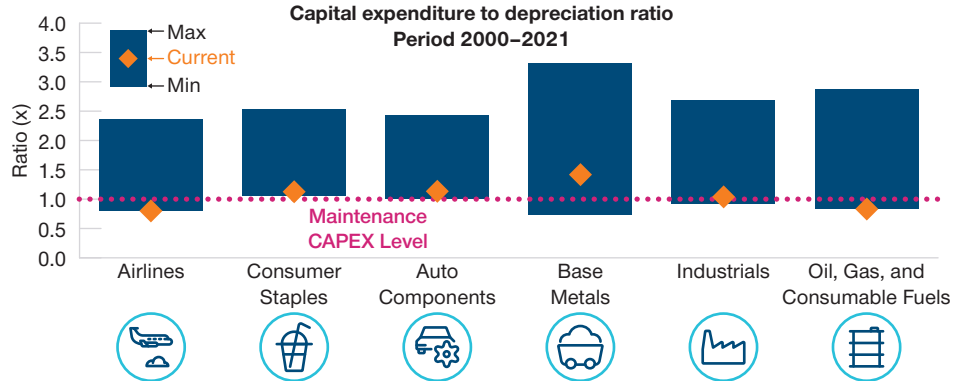
## Infrastructure Spending Is Well Overdue

We have heard phrases like “build back better” and “leveling up” as governments seek to recover after the pandemic. However, we have seen a chronic lack of investment at a top-down level ever since the GFC, despite an era of ultralow financing costs. There are a number of interrelated reasons for this, but a major one has been the anemic economic rebound we have witnessed after the financial crisis. In previous economic cycles, economic recoveries have been

“...we are excited about the potential for a new capital investment cycle forming after many years of underinvestment.”

## After Years of Underinvestment, a New Capex Cycle Is Forming

(Fig. 1) Many companies have been investing only at maintenance capex levels



As of December 31, 2021.

Source: Financial data and analytics provider FactSet. Copyright 2022 FactSet. All Rights Reserved. Most recent data available.

“...we believe the inflationary environment can be the catalyst to drive increased spending and awaken entrepreneurial spirits....”

much stronger, but economic growth in recent years has frequently undershot expectations. Meanwhile, at a corporate level, the lack of demand anticipated by companies is likely the reason for the past lack of investment spending. Businesses that aren't predicting higher demand are less likely to invest.

Looking forward, with the cost of everything going up (including wages), we believe the inflationary environment can be the catalyst to drive increased spending and awaken entrepreneurial

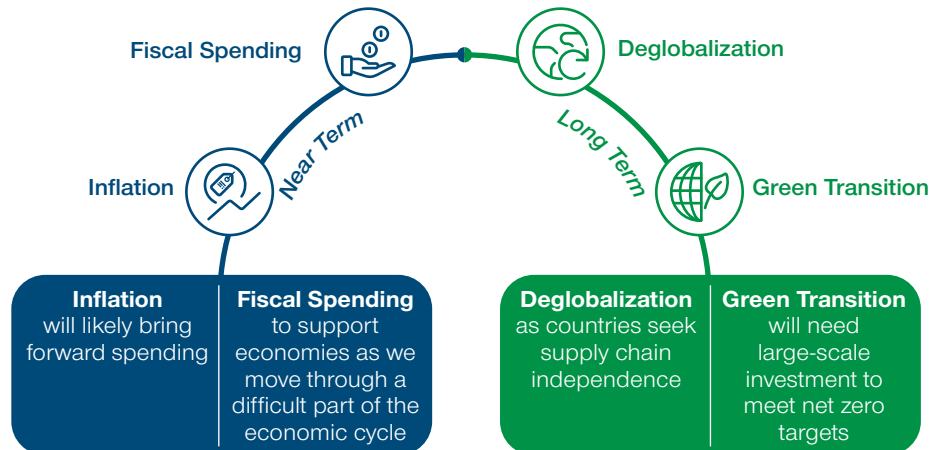
spirits (at both a company and government level). We have identified both near- and long-term reasons why a capex boom could be underway.

### Near Term—Inflation

Returning demand after the pandemic has met with disrupted supply chains, whether that be through China's zero-COVID policy (periodically closing important manufacturing hubs) or Russia's invasion of Ukraine (sending energy and agriculture prices sharply higher). Although we expect

## Four Drivers of Increase in Capital Expenditure

Inflation and fiscal spending to drive investment in the near term, while deglobalization and the green transition should support capex in the future



“...heightened geopolitical friction is likely to prove inflationary as tensions remain elevated and supply chains continue to be disrupted.

---

## USD 16 trillion

Estimated amount for China to meet its carbon neutrality goal by 2060.

inflation to peak at some point as demand destruction takes hold, it is likely, in our view, to settle back at higher levels than experienced in the post-GFC environment.

A major factor will be what we are calling “geopolitical inflation.” We believe it is unlikely that the conflict in Ukraine will be resolved quickly, and geopolitical tensions have also risen between China and Taiwan and—subsequently—China and the U.S. This heightened geopolitical friction is likely to prove inflationary as tensions remain elevated and supply chains continue to be disrupted. However, these inflationary pressures should encourage firms and governments to invest sooner—given that delaying would mean higher costs in the future.

### Near Term—Fiscal Spending

We expect greater fiscal spending and investment to support economies, especially as countries move through a difficult part of the economic cycle. This is likely to come in the form of increased handouts to consumers (tax cuts, energy caps) and greater spending on infrastructure projects to help drive growth. Both of these are inflationary unless they are managed in a fiscally neutral way.

Infrastructure is very much the backbone of any economy and helps to provide the framework for both economic growth and modernization, but it has been neglected for many years. Historically, expenditure on infrastructure has been the primary responsibility of governments or policymakers, but governments are increasingly entering into public-private partnerships with companies.

Importantly, the inelastic demand, high barriers to entry, and monopoly-like characteristics of many infrastructure and utility assets mean that their financial performance is not as sensitive to economic cycles as others. These companies also tend to offer higher pricing power and, therefore, better inflation protection.

### Long Term—Deglobalization

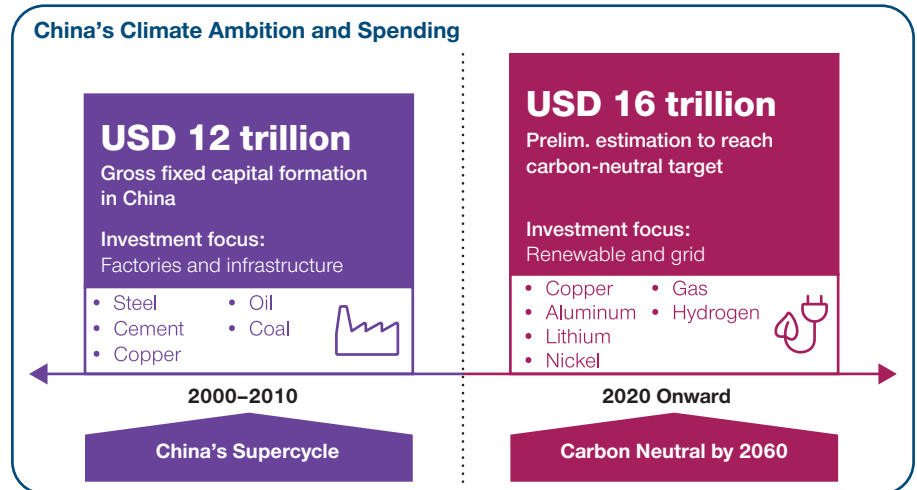
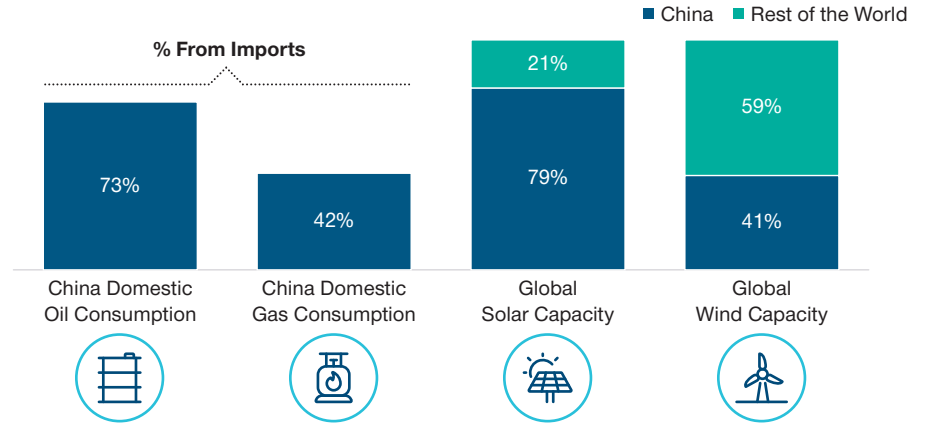
Deglobalization is already underway. We first heard about the potential in 2018 when the U.S.-China trade war ignited, but concerns have increased with the onset of the Russia-Ukraine conflict and supply chain disruptions stemming from the pandemic. This has focused policymakers’ minds on securing supply chain independence. With companies struggling to manufacture and deliver products throughout the pandemic, many companies are now telling us of their plans to regionalize, or “onshore,” their supply chains, despite the potential economic ramifications.

### Long Term—Green Transition

Many countries have set ambitious carbon reduction targets, but achieving them will require huge levels of investment. China is a great example, being the world’s largest fossil fuel emitter. Currently, China imports 73% of its oil and 42% of its gas needs (Figure 2). However, it has plans to take advantage of its dominance in solar and wind capacity to make greater use of renewable energy that will allow it to become much more self-sufficient. With China having spent around USD 12 trillion during its supercycle from 2000 to 2010 (building roads, bridges, airports, and other infrastructure projects), it is now forecast to spend almost USD 16 trillion on its green transition to meet its carbon neutrality goal by 2060.

## China Needs to Spend to Meet “Green” Targets

(Fig. 2) Spending forecasts far exceed China’s supercycle



As of March 31, 2022.

Sources: SolarZoom, CPIA, Jefferies estimates, Credit Suisse. © 2022 CREDIT SUISSE GROUP AG and/or its affiliates. All rights reserved.

### New Capex Cycle Could Drive Better Returns for Value-Oriented Companies

With a new capex/investment cycle in the offing, we expect this to support earnings growth, particularly in areas like utilities and industrials. Meanwhile, with inflation likely to remain elevated,

we expect central banks to continue to raise interest rates, benefiting financials—banks in particular. With financials, industrials, and utilities making up large parts of the value investment universe, we are excited about the potential opportunities that lie ahead.

T. Rowe Price focuses on delivering investment management excellence that investors can rely on—now and over the long term.

## T. Rowe Price<sup>®</sup>

### Important Information

**This material is being furnished for general informational and/or marketing purposes only.** The material does not constitute or undertake to give advice of any nature, including fiduciary investment advice, nor is it intended to serve as the primary basis for an investment decision. Prospective investors are recommended to seek independent legal, financial and tax advice before making any investment decision. T. Rowe Price group of companies including T. Rowe Price Associates, Inc. and/or its affiliates receive revenue from T. Rowe Price investment products and services. **Past performance is not a reliable indicator of future performance.** The value of an investment and any income from it can go down as well as up. Investors may get back less than the amount invested.

The material does not constitute a distribution, an offer, an invitation, a personal or general recommendation or solicitation to sell or buy any securities in any jurisdiction or to conduct any particular investment activity. The material has not been reviewed by any regulatory authority in any jurisdiction.

Information and opinions presented have been obtained or derived from sources believed to be reliable and current; however, we cannot guarantee the sources' accuracy or completeness. There is no guarantee that any forecasts made will come to pass. The views contained herein are as of the date written and are subject to change without notice; these views may differ from those of other T. Rowe Price group companies and/or associates. Under no circumstances should the material, in whole or in part, be copied or redistributed without consent from T. Rowe Price.

The material is not intended for use by persons in jurisdictions which prohibit or restrict the distribution of the material and in certain countries the material is provided upon specific request. It is not intended for distribution to retail investors in any jurisdiction.

**Australia**—Issued in Australia by T. Rowe Price Australia Limited (ABN: 13 620 668 895 and AFSL: 503741), Level 50, Governor Phillip Tower, 1 Farrer Place, Suite 50B, Sydney, NSW 2000, Australia. For Wholesale Clients only.

**Brunei**—This material can only be delivered to certain specific institutional investors for informational purpose only. Any strategy and/or any products associated with the strategy discussed herein has not been authorised for distribution in Brunei. No distribution of this material to any member of the public in Brunei is permitted.

**Canada**—Issued in Canada by T. Rowe Price (Canada), Inc. T. Rowe Price (Canada), Inc.'s investment management services are only available to Accredited Investors as defined under National Instrument 45-106. T. Rowe Price (Canada), Inc. enters into written delegation agreements with affiliates to provide investment management services.

**DIFC**—Issued in the Dubai International Financial Centre by T. Rowe Price International Ltd which is regulated by the Dubai Financial Services Authority as a Representative Office. For Professional Clients only.

**EEA**—Unless indicated otherwise this material is issued and approved by T. Rowe Price (Luxembourg) Management S.à r.l. 35 Boulevard du Prince Henri L-1724 Luxembourg which is authorised and regulated by the Luxembourg Commission de Surveillance du Secteur Financier. For Professional Clients only.

**Hong Kong**—Issued in Hong Kong by T. Rowe Price Hong Kong Limited, 6/F, Chater House, 8 Connaught Road Central, Hong Kong. T. Rowe Price Hong Kong Limited is licensed and regulated by the Securities & Futures Commission. For Professional Investors only.

**Indonesia**—This material is intended to be used only by the designated recipient to whom T. Rowe Price delivered; it is for institutional use only. Under no circumstances should the material, in whole or in part, be copied, redistributed or shared, in any medium, without prior written consent from T. Rowe Price. No distribution of this material to members of the public in any jurisdiction is permitted.

**Korea**—This material is intended only to Qualified Professional Investors. Not for further distribution.

**Mainland China**—This material is provided to qualified investors only. No invitation to offer, or offer for, or sale of, the shares will be made in the mainland of the People's Republic of China ("Mainland China", not including the Hong Kong or Macau Special Administrative Regions or Taiwan) or by any means that would be deemed public under the laws of the Mainland China. The information relating to the strategy contained in this material has not been submitted to or approved by the China Securities Regulatory Commission or any other relevant governmental authority in the Mainland China. The strategy and/or any product associated with the strategy may only be offered or sold to investors in the Mainland China that are expressly authorized under the laws and regulations of the Mainland China to buy and sell securities denominated in a currency other than the Renminbi (or RMB), which is the official currency of the Mainland China. Potential investors who are resident in the Mainland China are responsible for obtaining the required approvals from all relevant government authorities in the Mainland China, including, but not limited to, the State Administration of Foreign Exchange, before purchasing the shares. This document further does not constitute any securities or investment advice to citizens of the Mainland China, or nationals with permanent residence in the Mainland China, or to any corporation, partnership, or other entity incorporated or established in the Mainland China.

**Malaysia**—This material can only be delivered to specific institutional investor. This material is solely for institutional use and for informational purposes only. This material does not provide investment advice or an offering to make, or an inducement or attempted inducement of any person to enter into or to offer to enter into, an agreement for or with a view to acquiring, disposing of, subscribing for or underwriting securities. Nothing in this material shall be considered a making available of, solicitation to buy, an offering for subscription or purchase or an invitation to subscribe for or purchase any securities, or any other product or service, to any person in any jurisdiction where such offer, solicitation, purchase or sale would be unlawful under the laws of Malaysia.

**New Zealand**—Issued in New Zealand by T. Rowe Price Australia Limited (ABN: 13 620 668 895 and AFSL: 503741), Level 50, Governor Phillip Tower, 1 Farrer Place, Suite 50B, Sydney, NSW 2000, Australia. No Interests are offered to the public. Accordingly, the Interests may not, directly or indirectly, be offered, sold or delivered in New Zealand, nor may any offering document or advertisement in relation to any offer of the Interests be distributed in New Zealand, other than in circumstances where there is no contravention of the Financial Markets Conduct Act 2013.

**Philippines**—ANY STRATEGY AND/ OR ANY SECURITIES ASSOCIATED WITH THE STRATEGY BEING DISCUSSED HEREIN HAVE NOT BEEN REGISTERED WITH THE SECURITIES AND EXCHANGE COMMISSION UNDER THE SECURITIES REGULATION CODE. ANY FUTURE OFFER OR SALE OF THE STRATEGY AND/ OR ANY SECURITIES IS SUBJECT TO REGISTRATION REQUIREMENTS UNDER THE CODE, UNLESS SUCH OFFER OR SALE QUALIFIES AS AN EXEMPT TRANSACTION.

**Singapore**—Issued by T. Rowe Price Singapore Private Ltd. (UEN: 201021137E), 501 Orchard Rd, #10-02 Wheelock Place, Singapore 238880. T. Rowe Price Singapore Private Ltd. is licensed and regulated by the Monetary Authority of Singapore. For Institutional and Accredited Investors only.

**South Africa**—Issued in South Africa by T. Rowe Price International Ltd (TRPIL), 60 Queen Victoria Street, London, EC4N 4TZ, is an authorised financial services provider under the Financial Advisory and Intermediary Services Act, 2002 (Financial Services Provider (FSP) Licence Number 31935), authorised to provide "intermediary services" to South African Investors. TRPIL's Complaint Handling Procedures are available to clients upon request. The Financial Advisory and Intermediary Services Act Ombud in South Africa deals with complaints from clients against FSPs in relation to the specific services rendered by FSPs. The contact details are noted below: Telephone: +27 12 762 5000, Web: www.faisombud.co.za, Email: info@faisombud.co.za

**Switzerland**—Issued in Switzerland by T. Rowe Price (Switzerland) GmbH, Talstrasse 65, 6th Floor, 8001 Zurich, Switzerland. For Qualified Investors only.

**Taiwan**—This does not provide investment advice or recommendations. Nothing in this material shall be considered a solicitation to buy, or an offer to sell, a security, or any other product or service, to any person in the Republic of China.

**Thailand**—This material has not been and will not be filed with or approved by the Securities Exchange Commission of Thailand or any other regulatory authority in Thailand. The material is provided solely to "institutional investors" as defined under relevant Thai laws and regulations. No distribution of this material to any member of the public in Thailand is permitted. Nothing in this material shall be considered a provision of service, or a solicitation to buy, or an offer to sell, a security, or any other product or service, to any person where such provision, offer, solicitation, purchase or sale would be unlawful under relevant Thai laws and regulations.

**UK**—This material is issued and approved by T. Rowe Price International Ltd, 60 Queen Victoria Street, London, EC4N 4TZ which is authorised and regulated by the UK Financial Conduct Authority. For Professional Clients only.

**USA**—Issued in the USA by T. Rowe Price Associates, Inc., 100 East Pratt Street, Baltimore, MD, 21202, which is regulated by the U.S. Securities and Exchange Commission. For Institutional Investors only.

© 2022 T. Rowe Price. All Rights Reserved. T. ROWE PRICE, INVEST WITH CONFIDENCE, and the Bighorn Sheep design are, collectively and/or apart, trademarks of T. Rowe Price Group, Inc.